

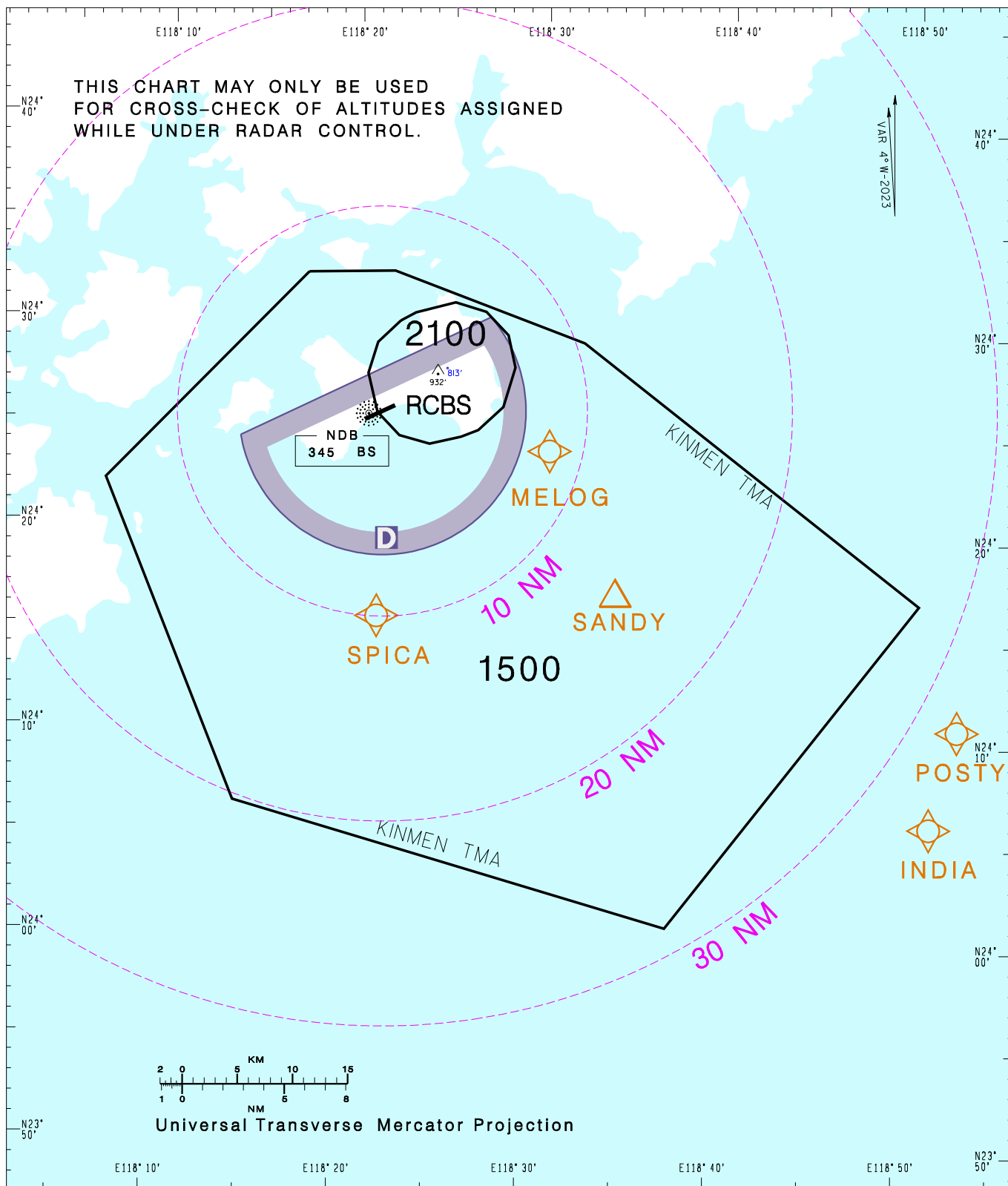
航管監視最低高度圖
ATC Surveillance
Minimum Altitude Chart

AD ELEV. Trans
RCBS 56 FT Level:FL130
Alt:11,000'

KAOHSIUNG APP
124.6
133.1

KINMEN TWR
118.0
126.2
ATIS 127.2

金門機場
Kinmen Aerodrome



NOTE

1. Distance circles are centred on RCBS ARP(242544N 1182140E).
2. Minimum altitudes are calculated taking into account of minimum clearance above terrain/obstacles. Radar control service cannot be provided to aircraft below the applicable minimum. Aircraft at designated altitude in relevant sector is not assured of radar contact.
3. Altitudes, Levels, Heights are in feet.
4. Only significant spot heights are shown.
5. LOSS OF COMMUNICATION
 - a. SQUAWK 7600 immediately, and
 - b. follow AIP ENR 1.6.4 "Radio Communication Failure Procedures."

CHANGES: RECHART